

Network Asset management

Patience Nagaba
pnagaba@renu.ac.ug



Network Asset Management

Outline

- Introduction
- Network Documentation
- Network Migration
- Where to buy what

Introduction

- Your network is the foundation on which all services are provisioned.
- Good knowledge of your network saves time while troubleshooting
- Some networks are so large

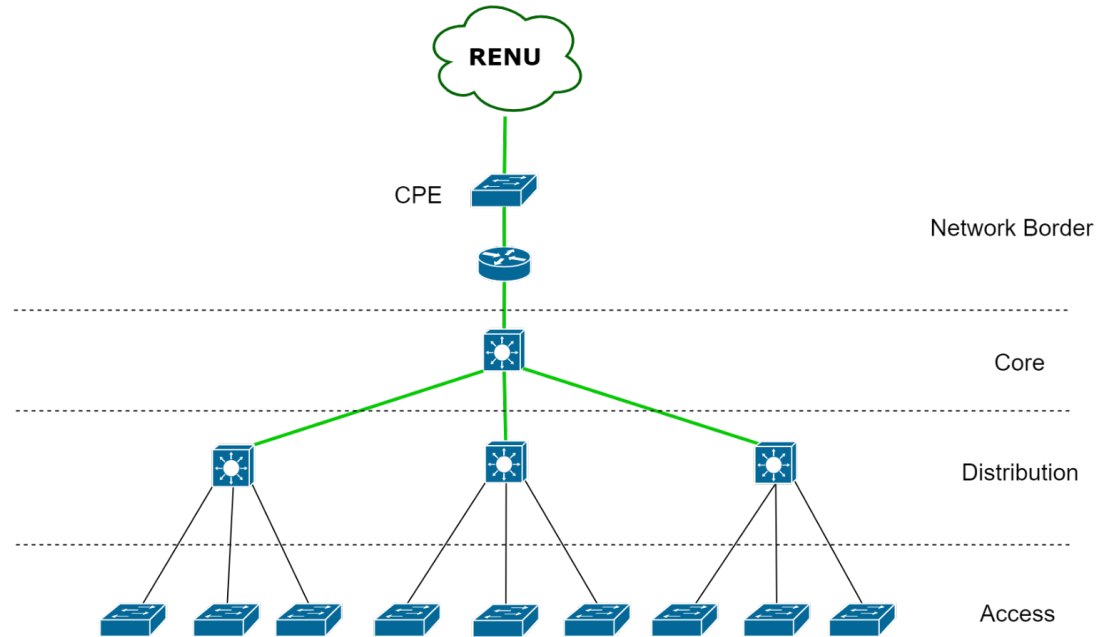


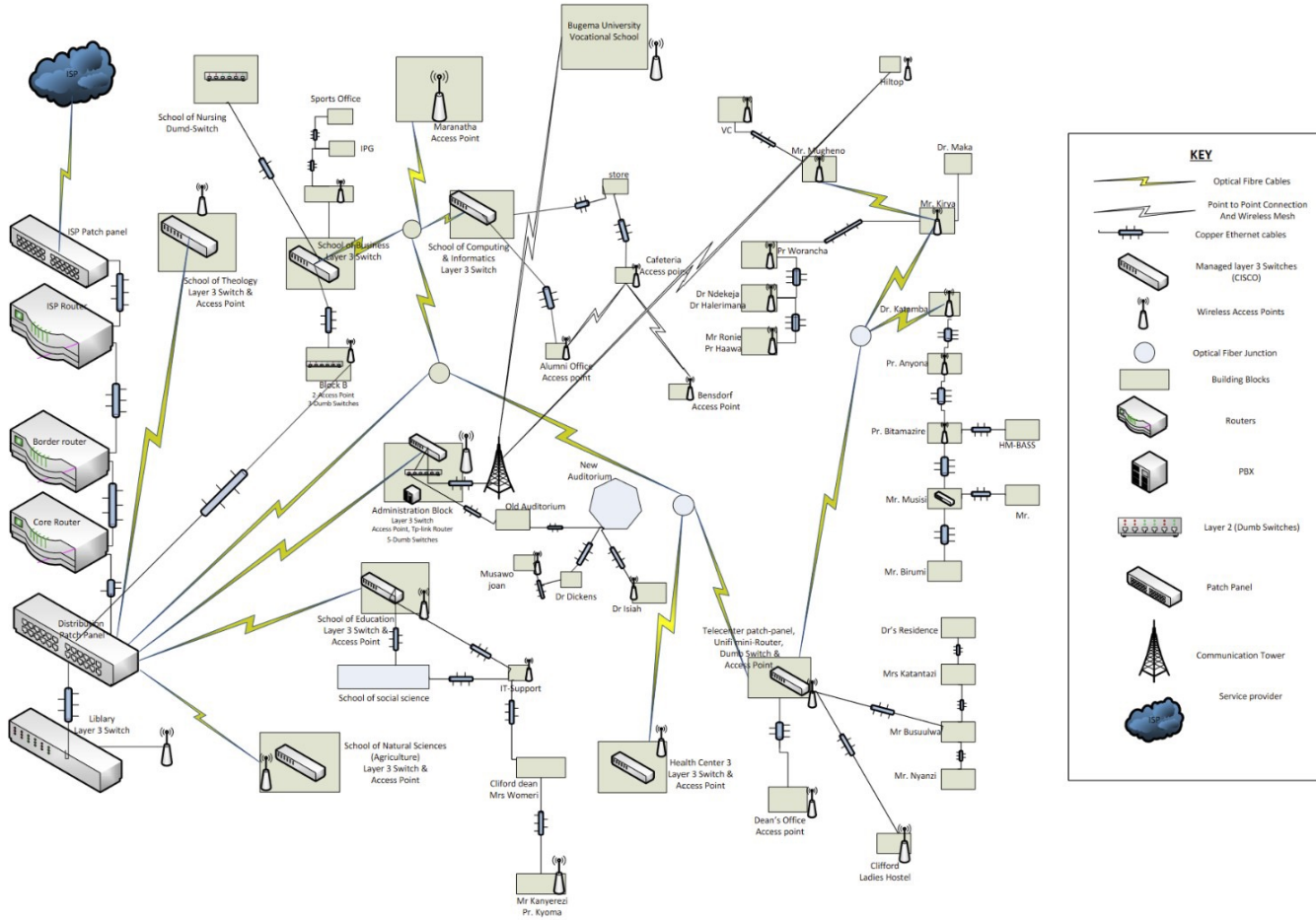
Network Documentation

Network documentation is a technical record of the hardware, software, servers, directory structure, user profiles, data, and how it all works together.

- Network diagram (devices, functions)
- Network resources (IP address, VLANs)
- Access credentials (rights of IT teams)

Network Diagram - Example





Draw your school's network diagram



Draw.io for Windows

Free In English V 20.8.16

★ 4.3 (766 👤)  Security Status



Why network documentation ?



- Easy troubleshooting
- Continuity in case of staff departure
- Saves time



Recommended service providers



Cables –fibre, copper



Unifi Access points

Mobile: +256 709474747

Ken@simplifinetworks.com

www.simplifinetworks.com

MikroTik devices –official distributor

Recommended service providers



Juniper Equipment

SPIDD AFRICA LTD

Contact Richard Mangu - 0772712584



Recommended service providers



Building LANs, Migrations from building to building

Winston @0782738483

LINE OPTICS LIMITED



Raymond Masiira

[256 0200 952 233](tel:2560200952233) / [0753175934](tel:0753175934)



RENU Escalation Matrix

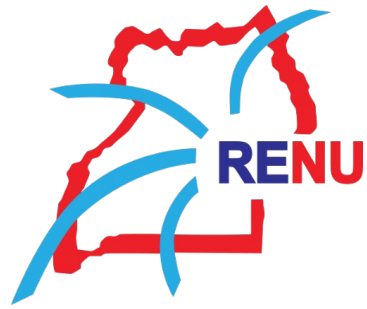


| Levels | Entity | Email | Telephone |
|--------|---------------------------------|---|------------------|
| 1 | Network Operations Center (NOC) | noc@renu.ac.ug | +256 783 979 515 |
| | | cc: technical@renu.ac.ug | |
| 2 | NOC Lead | rmatovu@renu.ac.ug | +256 775 257 320 |
| 3 | Network Engineer | atumwesigye@renu.ac.ug | +256 779 255 079 |
| | | bkyemba@renu.ac.ug | +256 783 421 481 |
| 4 | Senior Network Engineer | bmasiga@renu.ac.ug | +256 781 487 706 |
| 5 | CEO | ceo@renu.ac.ug | +256 772 666 336 |

NOTE:

For all issues please send an email to the RENU NOC to noc@renu.ac.ug and cc: technical@renu.ac.ug





THE END